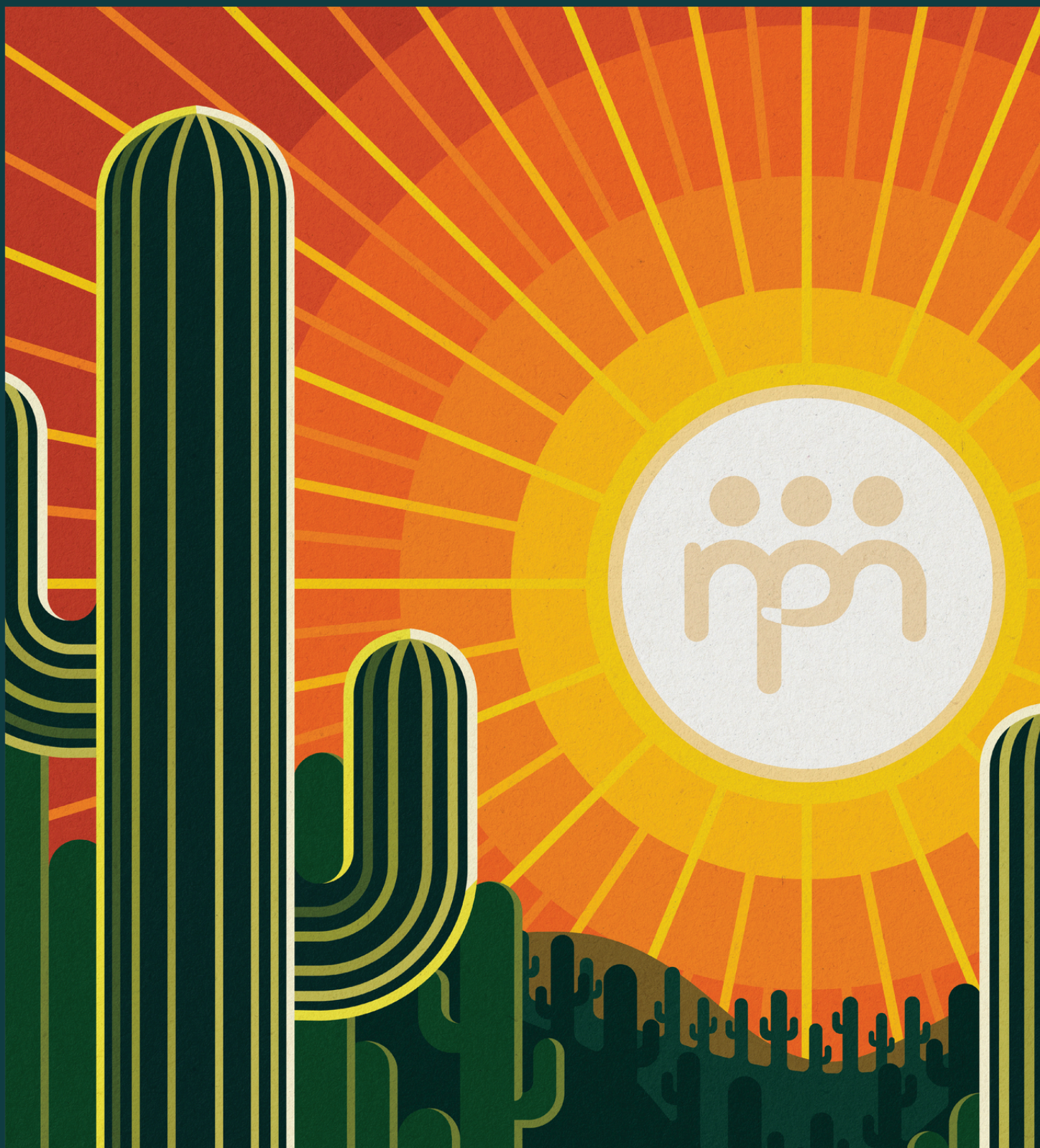


SHINING A LIGHT ON PREVENTION

CONNECTING RESEARCH, PRACTICE, INNOVATION, AND EQUITY

August 13-15, 2024
Phoenix, AZ



AGENDA AT A GLANCE

TUESDAY, AUGUST 13

7:00 AM	Registration Desk Opens
7:30 AM	Breakfast and Exhibitor Viewing
8:30 AM	Conference Welcome and Opening
9:00 AM	Keynote Session
10:00 AM	Networking Break and Exhibitor Viewing
10:30 AM	Power Session 1
12:00 PM	Lunch (Provided)
1:30 PM	Workshop Session 1
2:30 PM	Networking Break and Exhibitor Viewing
3:00 PM	Workshop Session 2
4:00 PM	Enjoy Phoenix!

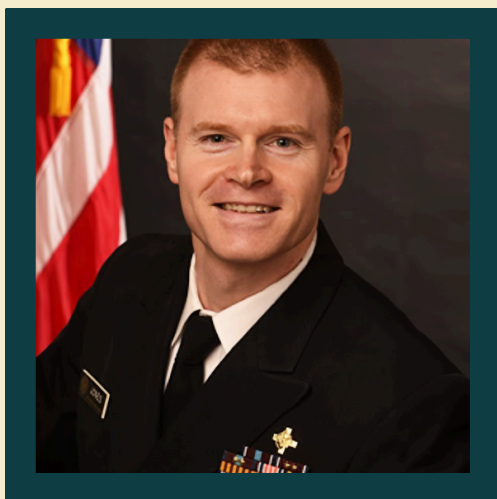
WEDNESDAY, AUGUST 14

7:30 AM	Breakfast and Exhibitor Viewing
9:00 AM	Power Session 2
10:15 AM	Networking Break and Exhibitor Viewing
10:45 AM	Workshop Session 3
11:45 AM	Boxed Lunch (Extended Lunch Break)
1:30 PM	Power Session 3
2:45 PM	Networking Break and Exhibitor Viewing
3:00 PM	NPN Awards Presentation
3:30 PM	Keynote Session
4:30 PM	Enjoy Phoenix!

THURSDAY, AUGUST 15

7:30 AM	Breakfast and Keynote
9:00 AM	Break
9:15 AM	Workshop Session 4
10:15 AM	Break
10:30 AM	Workshop Session 5
11:45 AM	2025 NPN Conference Announcement and Closing Remarks
12:00 PM	Conference Concludes

PLENARY SPEAKERS



Christopher M. Jones

PharmD, DrPH, MPH, CAPT, US Public Health Service
Director, Center for Substance Abuse Prevention
SAMHSA, U.S. Department of Health and Human Services

Moving Comprehensive Prevention Forward: Leveraging Data, Prevention Science, and Partnerships

This session will provide an update on the latest substance use epidemiology and discuss how data, prevention science, and partnerships can help propel a comprehensive prevention approach forward.



Carlton Hall

President and CEO of Carlton Hall Consulting LLC (CHC)

Prioritizing Prevention to Address the Fierce Urgencies of Now!

This keynote will discuss poly-drug misuse, racial disparities, and other social factors. The implications of creating an inequity among those who misuse, seek recovery and are exposed to the emerging commercialism. The presenter will reframe perceived “gaps in the national conversation” as opportunities to change the conversation and offer “strategies” as critical skills required to specifically impact population-level reductions in polysubstance misuse with scale and scope in diverse communities.



Dr. Bonnie Halpern-Felsher

PhD, FSAHM Marron and Mary Elizabeth Kendrick Professor
in Pediatrics II Department of Pediatrics, Division of Adolescent
Medicine, Stanford University PI, Reach Lab

Adolescent Cannabis and Tobacco/Vaping: The What, Why, and How to Help

New tobacco/nicotine, cannabis, and other drugs are infiltrating the market. This presentation will provide an overview of these products and the risks they pose. The presentation will then focus on how best to educate, prevent, and reduce use, including several Stanford REACH Lab-created evidence-based curriculums and resources that can be used to help prevent and reduce use.

7:00 AM - 7:30 AM

Registration Desk Opens

7:30 AM - 8:30 AM

Breakfast & Exhibitor Viewing

8:30 AM - 9:00 AM

Conference Welcome and Opening

9:00 AM - 10:00 AM

Keynote Session

CAPT Christopher M. Jones, PharmD, DrPH, MPH

Moving Comprehensive Prevention Partnerships Forward: Leveraging Data, Prevention Science, and Partnerships

10:00 AM - 10:30 AM

Networking & Exhibitor Viewing

10:30 AM - 11:45 AM

Power Session 1

PS 1A - The Dangers of Fake Pills and Illicit Fentanyl: What Everyone Should Know, *Richard Lucey, Cheri Oz, Carlos Santoscoy, Brenda Young* | **Kaibab Room**

Fentanyl remains the deadliest drug threat facing our country. This facilitated panel discussion will feature federal, state, and local perspectives on this issue, including efforts to educate the public about the dangers of fake pills and illicit fentanyl. There will be ample time for attendees to ask questions of the panelists.

PS 1B - Shining a Light on Health Equity in Prevention: Identifying and Supporting Evidence-based Programs that Reduce Inequity in Diverse Communities, *Brittany Cooper, Jaymie Vandagriff* | **Lantana Room**

States must define and deliver evidence-based prevention programs (EBP) to reduce disparities in substance use and mental health outcomes, while also allowing for flexibility to fit the needs and capacity of diverse contexts. During this presentation, attendees will learn from an innovative approach Washington State is developing in collaboration with researchers to define, identify, and promote equity-informed EBPs that balance rigor with cultural and community fit.

PS 1C - Addressing Opioid Overdose-related Deaths through SAMHSA Programs: Key Takeaways from FY 2022 Data, *Shweta Palakkode, Tanya Geiger, Whitney Johnson* | **Mesquite Room**

This session will share perspectives on how SAMHSA prevention programs are addressing opioid overdoses. In addition, we will discuss challenges, barriers, and successes to implementing overdose prevention training programs at the local level. Further, we will discuss the role of partnerships, best practices, evidence-based approaches, and implicit bias and cultural competency trainings to address opioid overdoses.

PS 1D - Improving Workforce Retention in the Substance Misuse Prevention Field: Navigating Your Prevention Career Roadmap, *Erin Burnett, Sarah Johnson* | **Noble Room**

This session will provide an overview of the resources developed by the New England PTTC for the new and mid-level prevention specialist to aid them in their professional development and career growth in the substance misuse prevention field. Participants will build their own career road maps and identify which professional developments stops they need to make along their prevention career journey.

12:00 PM - 1:30 PM

Buffet Lunch (Provided)

WS 1A - Demystifying College Campuses: What You Need to Know to Build Effective Partnerships with Institutions of Higher Education, *James Lange* | Room Palm 3AB

Campus and community partnerships are critical for effective prevention in college towns. However, IHEs have a unique culture that can be a barrier for engagement. Join us for a crash course in what you need to know to effectively engage IHEs and increase the likelihood of developing successful partnerships.

WS 1B - Research Learnings and Opportunities for Prevention Education of Cigarillo Use among Youth and Young Adults, *Brittney Lee, Allison Alexander* | Room Palm 3CD

Youth are using cigarillos at similar rates to cigarettes which poses a public health concern due to exposure to tobacco, nicotine, and toxic chemicals. In this workshop, FDA CTP will highlight efforts to better understand cigarillo use among youth and young adults and methods to raise awareness about this public health concern among public health stakeholders.

WS 1C - Prevention System Nirvana, *Coleen Smith, Nicole Hackley* | Room Sierra 1/2

Attendees will learn about the benefits of a comprehensive, statewide prevention training system that includes an extensive onboarding for those new to prevention. We'll detail all the training options provided to the workforce and how they're evaluated for sustainability and effectiveness. We'll explain why it's so important to have an adequately trained workforce and what the benefits have been.

WS 1D - An Innovative Approach to Building Resiliency, *Nicole Sealfon, Rana Karslioglu, Amy Laugelli, Rebecca Rigney, Fadia Shaya* | Noble Room

The Resiliency Program is an exciting innovative example of the Alternative strategy. This program focuses on resilience through building new skills and gaining positive relationships through structured activities with youth. Best practices and evaluation findings will help inform how to implement a similar program.

WS 1E - Revisiting the Epidemiological Profile: Key Components and Dissemination, *Maria Valenti, Sarah Ivan, Lauren Williams, Dina Khalil* | Mesquite Room

This session will explore key components of a quality epidemiological profile and their implications for substance misuse prevention planning. It will also examine innovative ways to disseminate profile findings to ensure that data can be readily used to inform practice.

WS 1F - What? Me Supervise?, *Julie Stevens* | Lantana Room

In many states, jurisdictions and tribes, there is little to no training specifically for supervising prevention staff. The basic goals of supervision of the prevention specialist are to assure the delivery of high quality interventions, create a positive work environment, and develop staff professional and administrative skills. This session will discuss characteristics of effective supervisors, the prevention supervisor job description, supervision tools and ethical issues for supervisors.

WS 1G - Building the Prevention BIPOC Workforce..."This is how we do it," *Costella Green, Tracy Johnson, Albert Gay, Raylette Johnson, Holly Raffle* | Room Sonoran 1

This presentation will provide an overview of the BIPOC PST strategy that communities, states, or organizations can implement to lead in workforce development, prevention certification, and programming and practice toward a culture of diversity, equity, and inclusion (DEI). This presentation will provide an overview of customized real-life training to ensure and enhance the BIPOC workforce's ability to build on a sturdy foundation of knowledge, healing, history, and humility.

WS 1H - The Changing Landscape of Alcohol Access and Availability, *Kathleen Roberts, Elizabeth Nettles* | Room Sonoran 2

This workshop will share activities and lessons learned to address to-go drink policies impacting alcohol consumption and consequences. Presenters will provide data, challenges, and key successes in their local investigation of consumption, consequences, and the community context focused on alcohol and to-go drink policy in Jacksonville, Florida. These efforts are intended to better understand how to utilize local and data patterns and trends to identify appropriate research-supported strategies and evidence-based programs that weave prevention across the entire system of care.

WS 11 - Cross-Cultural Collaborations to Strengthen the Pacific Island Prevention Workforce, Alyssa O'Hair, Everlynn Temengil, James Arriola | Room Sonoran 3

Cross-cultural collaborative approaches to training and technical assistance (TTA) that combine prevention science with local culture, history, knowledge, faith, and skill can result in powerful outcomes. This workshop presentation will provide concrete examples of how the six Pacific Jurisdictions and a behavioral health TTA center at a US-based university collaborated to strengthen and maintain the Pacific Islander prevention workforce.

2:30 PM - 3:00 PM**Networking Break & Exhibitor Viewing****3:00 PM - 4:00 PM****Workshop Session 2****WS 2A - Prevention System Enhancement in Vermont: Expanding Access, Equity, Innovation and Reach, Traci Sawyers | Room Palm 3AB**

This workshop will focus on how Vermont leveraged cannabis excise tax dollars to enhance and expand its substance misuse prevention system. Four Vermont Prevention Lead Organizations (VPOs or "Prevention Leads") were established in Fiscal Year 2024 to allocate these funds based on the assessment of regional data, identified risk and protective factors, and community capacity and readiness.

WS 2B - Screen4Success: Preventing Early Initiation of Substance Use through Early Identification, Screening, Brief Interventions and Referrals to Services, Robert Vincent | Room Palm 3CD

SAMHSA's "Talk. They Hear You."® campaign helps parents and caregivers, educators, and community members get informed, prepare, and take action to prevent underage drinking and other substance use. Screen4Success (Individual and Professional Use) represents SAMHSA's commitment to supporting the comprehensive wellness journey of entire families and communities, enhancing our capacity to cater to a diverse range of needs. This tool is meant to be a companion to the Screening and Brief Intervention options currently available for services and will assist in linking people to the care that they need to address all concerns identified through the short screener.

WS 2C - Foundations of Prevention Science and Practice: Results of Bringing Science to Practice Through Training, Zili Sloboda | Room Sonoran 1

This presentation will describe APSI's Foundations curriculum and the findings from a randomized controlled trial of the school-based prevention curriculum conducted to demonstrate the sustainability and short-term outcomes of students' attitudes and behaviors and on-going assessments of all Foundations curricula through pre-/post-test results and participant evaluations of the training experience as well as of its applicability to their work.

WS 2D - Population-level Prevention and Workforce Development through Evidence-based Skills Training, Jason Fruth, Carmen Irving | Room Sonoran 2

The state of Arizona implemented a multi-departmental population-level prevention initiative beginning in 2019. This multi-sector initiative brought evidence-based skills training to over 7,000 educational, human service, and youth development professionals in addition to foster, residential, and recovery care. The workforce development and statistically significant outcomes from this initiative are replicable elsewhere with a commitment to prevention, young people, and those who care for them.

WS 2E - Navigating Underage Drinking Enforcement Before, During & After the Pandemic: The South Carolina Experience, Michael George, Michelle Nienhius, Wehme Hutto | Room Sonoran 3

The presentation provides a follow-up to a previous evaluation conducted on underage drinking enforcement and media efforts in South Carolina. The original evaluation showed a decline in drinking and driving crashes for drivers under 21 when compliance checks increased. The follow-up study covers the period from 2017 to 2022, including the impact of the COVID-19 pandemic on compliance checks and traffic crashes related to underage drinking.

**WS 2F - Shedding a Little Light on the Prevention Specialist Certification Process, *Marissa Carlson*
Kaibab Room**

As an advancing field of professional service, substance misuse prevention is expanding through certification and concurrent initiatives with behavioral health. Despite the importance of certification, we know that real & perceived barriers can get in the way of prevention professionals pursuing their certification with confidence. This workshop will illuminate various aspects of the certification process and be a responsive environment in which participants can ask questions to further their understanding of the specific body of knowledge and skills needed to meet the requirements of certification.

WS 2G - Practicing Trauma-Informed Prevention, *Jill Johnson, Kim Magoon* | Lantana Room

Trauma-informed prevention is a powerful approach for promoting resilience and creating environments that prioritize safety, trust, and collaboration. Join us to learn about the influence of trauma, uplifting protective factors for resilience in prevention work, and a demonstration of six ways trauma-informed practice can be applied to prevention strategies.

WS 2H - FDA's "The Real Cost" Tobacco Prevention Campaign: Saving Lives for a Decade and Counting, *Ravi Choudhuri, Brittney Lee, Allison Alexander* | Room Sierra 1/2

Attendees will learn about the benefits of a comprehensive, statewide prevention training system that includes an extensive onboarding for those new to prevention. We'll detail all the training options provided to the workforce and how they're evaluated for sustainability and effectiveness. We'll explain why it's so important to have an adequately trained workforce and what the benefits have been.

**WS 2I - Building Campus Capacity for Substance Use Prevention, *Brenda Young, Avery Nordgren*
Mesquite Room**

This training will discuss one approach on how to build campus capacity for substance use prevention through the use of skill building training for non-clinical faculty, staff and student leaders. Using the principles of motivational interviewing (MI), participants will learn how to recognize a struggling person and how to leverage compassionate communication skills that will strengthen a person's own motivation and commitment to behavior change.

4:00 PM**Enjoy Phoenix!**

7:30 AM - 9:00 AM

Breakfast & Exhibitor Viewing

9:00 AM - 10:15 AM

Power Session 2

PS 2A - Better Together: A Dialogue on Establishing Research and Practice Partnerships to Inform the Evidence Base for Substance Use Prevention Programs, *Courte VanVoorhees, Amy Goldstein, Ingrid Donato* | **Kaibab Room**

Community-level data collection can be a challenge for local agencies and organizations, while connecting to practitioners and communities can be a challenge for researchers. Community settings where substance misuse prevention interventions occur can provide opportunities for adaptations and innovations that could benefit from additional evaluation support—as well as providing an opportunity for research and dissemination. This dialog invites both practitioners and researchers to brainstorm how to bridge that gap and how NIDA and SAMHSA can promote future partnerships.

PS 2B - Becoming a Prevention Influencer! *Carlton Hall, Cedric Hall* | **Lantana Room**

How can we authentically involve and authorize youth to advocate for prevention science? During this session we will introduce a new concept to prevention to reflect our evolving times. The overall goal of the training is to provide participants the information they can use to become a Prevention Influencer. Participants will learn about and practice skills that will enhance your abilities to engage and influence policy makers, youth and others – on those issues that are important to you.

PS 2C - Preventing Drug Misuse Among College Students: The Importance of Strategic Planning and Addressing Culture, *Richard Lucey, Allison Smith* | **Mesquite Room**

This session focuses on current drug use rates among college students, the importance of strategic planning and considering culture across all steps of the Strategic Prevention Framework, and DEA's resources for professionals working to prevent drug use and misuse among college students. There will be ample opportunity for attendees to ask questions and engage in discussion with the presenters.

PS 2D - Navigating the Substance Misuse Prevention Landscape: Advancing Health Equity Amidst Controversy, *Nicole Augustine* | **Noble Room**

This session will provide a space for participants to engage in an open and constructive dialogue about the complexities of promoting health equity in today's substance misuse prevention environment, where terms like "diversity," "equity," and "inclusion" are often contested. Through real-world examples and shared experiences, participants will explore strategies for upholding equity and inclusion principles in their work efforts despite external pressures and opposition that can make it difficult to do so.

10:15 AM - 10:45 AM

Networking Break & Exhibitor Viewing

10:45 AM - 11:45 AM

Workshop Session 3

WS 3A - Youth Tobacco & Vaping Prevention: CT's Tobacco Prevention & Enforcement Program, *Jacquelyn Camposano, Kelley Edwards* | **Room Sonoran 1**

This workshop will increase the participant's knowledge of the enforcement and education strategies CT is effectively using to reduce youth access to e-cigarette and tobacco products. Attendees will view the educational materials and training videos created for retailers, view surveys developed to solicit feedback on these materials, and hear about enforcement partnerships that are effectively limiting youth access to tobacco products.

WS 3B - Bringing an Earlier and Broader Approach to Prevention to Local Schools and Communities, *Linda Richter, Cori Hammond* | Room Sonoran 2

This presentation will share lessons learned from an innovative state-wide program to bring prevention science and effective practice to a diverse group of local K-12 schools and the communities they serve with the goal of enhancing their substance use prevention and mental health service delivery. It will explain strategies for translating key principles of substance use prevention research and evidence-based practice to the unique and localized needs of schools and communities tackling unprecedented escalations in student mental health and substance use problems.

WS 3C - Prioritizing Data for a Comprehensive Prevention Plan, *Lisa Chaney, Dola Williams* Room Sonoran 3

Data prioritization to determine prevention performance measures can seem like a daunting task given the variability, comparability, and availability of quality data. This presentation provides guidance on the prioritization process and specific elements to consider when reviewing data indicators. Using a template to track, weigh, and consider data, the presentation walks participants through the process used in Kansas to prioritize data for a statewide prevention plan with meaningful goals and objectives.

WS 3D - What Does "Evidence-based Prevention" Look Like in the REAL WORLD? A Practical and Realistic Conversation about Building Effective, Nimble Prevention Infrastructure, *Brian Bumbarger, Craig PoVey, Terri Schreiber* | Room Palm 3AB

The prevention field is constantly shifting and evolving (from emerging trends and community needs, workforce challenges, funding and policy limitations, and the knowledge/research/evidence base). This panel presentation and interactive discussion will address the realistic challenges and limitations state and local prevention practitioners and systems leaders face when trying to adopt (and sustain) a data-informed, and evidence-based approach to prevention in a constantly evolving landscape. The panelists bring decades of experience spanning the boundaries of research, policy and practice at the local, state and national levels, to offer practical, realistic recommendations and examples of what an effective prevention infrastructure looks like, and the outcomes it can realistically achieve and sustain.

WS 3E - How SAR High School is Using Prevention Science to Address Risk and Protective Factors in their Modern Orthodox Jewish Community, *Jennifer Hogge, Rivka Schwartz* | Room Palm 3CD

Join this session to learn how SAR High School in Riverdale, New York worked to develop ways to gather and interpret data about the broader community of Modern Orthodox high school students in the New York area and beyond. Presenters will also share how they went on to train the SAR HS school community in the Social Development Strategy and to provide a culturally adjusted version of Guiding Good Choices® to all ninth grade parents of SAR HS students and the broader Modern Orthodox Jewish community.

WS 3F - State Block Grant Implementation: Primary Prevention Requirements, Spending, and Six Primary Prevention Strategies, *Jessica Johnson, Damaris Richardson, Thia Walker* | Room Sierra 1/2

Since 1998, the Substance Use Block grant (SUBG) has required state recipients to set aside a minimum of 20% for primary prevention and to use part of these funds towards implementing primary prevention strategies. During this presentation, the SAMHSA Division of Primary Prevention will a) provide an overview of the SUBG block grant primary prevention requirements, b) share trend data on how states have spent primary prevention dollars, including the legislatively mandated 20% set aside for primary prevention, c) provide trend data on use of primary prevention strategies among the states, and d) describe the implications for statewide prevention systems.

WS 3G - Centralizing Data to Advance Prevention Goals: The Virginia Social Indicator Summary Dashboards, *T Schweimler, Colleen Hughes* | Kaibab Room

The Virginia Social Indicator Summary (VASIS) Dashboards, developed by OMNI Institute in partnership with the Virginia Department of Behavioral Health and Developmental Services and the State Epidemiological Outcomes Workgroup, bring together key behavioral health indicator data to encourage prevention professionals at state and local levels to use data to make key decisions and track progress toward desired outcomes. This presentation will highlight the creation of the dashboards, key developments over time in the evolution of the dashboards, and future plans to strengthen data-driven prevention in Virginia.

WS 3H - Innovations and Implications: Responding to Changing Community Needs, *Jane Casarez Mark Pilon* | Lantana Room

Prevention coalitions and agencies are often recognized as community experts on primary substance use prevention, but what happens when stakeholders and community members look to coalitions and agencies to support harm reduction initiatives? While this can present challenges, it also fosters opportunities to respond innovatively. By braiding harm reduction initiatives into primary prevention efforts, coalitions and prevention agencies are able to create a more comprehensive approach to increase protective factors and reduce the harms associated with substance use at the local level.

WS 3I - Tools for Practical Workforce Development, *Kim Magoon, Megan Hawkes* | Mesquite Room

With prevention career advancement more akin to a lattice not a ladder, recruitment and early onboarding must reflect and prepare professionals for the climb. Further, retaining a workforce requires competitive wages but can be further aided by opportunities for quality training, meaningful engagement, workplace wellness, and leadership. Join us as we highlight evaluation work from the Mental Health, Addition, and Prevention Technology Transfer Center (TTC) and discuss the workforce trends and ways to create sustainable recruitment and retention.

WS 3J - A Model for Providing Evaluation Technical Assistance to Local Prevention Providers, *Kim Dash, Cat Buechler, Sarah Hernandez* | Noble Room

In 2023 the New York State Office of Addiction Services and Supports worked with EDC to implement the Prevention Learning Series: an evaluation technical assistance initiative designed to help strengthen data collection activities implemented by OASAS' local prevention providers for needs assessment, implementation fidelity, and outcome evaluation purposes. The Series included four core elements: a technical assistance (TA) needs assessment, foundational learning, communities of practice, and customized TA with a subset of providers. Rapid cycle outcome evaluation tracked implementation and feedback on each element with improvements incorporated continuously. This presentation will provide details on the impetus for, gaps addressed by, components of, topics highlighted in, and outcomes associated with the implementation of this Series.

11:45 AM - 1:30 PM

Boxed Lunch (Extended Lunch Break)

1:30 PM - 2:45 PM

Power Session 3

PS 3A - Xylazine, Nitazenes, Hallucinogens, and Other Emerging Drug Trends Prevention Needs to Know, *Josh Esrick, Emily Patton, Olivia Stuart, Deborah Nixon-Hughes* | Kaibab Room

This presentation from the Central East Prevention Technology Transfer Center and Carnevale Associates, LLC provides an overview of five key emerging drug trends nationwide: xylazine, nitazenes, tianeptine, hallucinogens, and bromazolam. It explains what is known about the drivers behind these trends and discusses potential implications for the prevention field. It explains where and how to find more information about the emerging trends in your community or state. It also shares advice on how to use emerging trend data to support strategic planning efforts while upholding the principles of cultural humility and responsiveness.

PS 3B - Utilizing Change Management Principles in the Adoption of SAMHSA's Prevention Core Competencies, *Nicole Luciani, Onaje Salim, Ingrid Donato* | Lantana Room

Humans are inherently resistant to change for a number of reasons, and overcoming resistance to make a change – like building and using skills to adopt SAMHSA's Prevention Core Competencies – is challenging. We can tap into the change management field to strategically overcome such resistance, build readiness, and sustain the change. This workshop will provide an overview of applicable change management practices we can use to adopt and actualize the core competencies on a system, organizational, or team level.

PS 3C - Creating Relevant Media Focused on Youth Marijuana Use, Joe Eberstein |**Mesquite Room**

This session will discuss the challenges related to pitching cannabis-related stories to the media. It will highlight examples of our work with ABC News, local media outlets, social media, and discuss the community partners we established relationships with at large health care institutions.

PS 3D - Using Prevention Science to Support Community Action: Long-term Effects of Communities That Care on Positive Youth Development, Margaret Kuklinski, Jennifer Hogge | Noble Room

Join Dr. Margaret Kuklinski as she takes participants through the longitudinal findings of the Community Youth Development Study (a long-term, randomized control trial of Communities That Care). Dr. Kuklinski will describe the study design and show how data support the logic model for Communities That Care as well as significant outcomes related to substance abuse, violence, delinquency, college completion, and handgun carrying.

2:45 PM - 3:00 PM**Networking Break & Exhibitor Viewing****3:00 PM - 3:30 PM****NPN Awards Presentation****3:30 PM - 4:30 PM****Keynote Session**

Dr. Bonnie Halpern-Felsher, Director, Stanford REACH Lab
Adolescent Cannabis and Tobacco/Vaping: The What, Why, and How to Help

4:30 PM**Enjoy Phoenix!**

8:00 AM - 9:00 AM

Breakfast & Keynote Session

Carlton Hall, President and CEO of Carlton Hall Consulting LLC (CHC)
Prioritizing Prevention to Address the Fierce Urgencies of Now!

9:00 AM - 9:15 AM

Break

9:15 AM - 10:15 AM

Workshop Session 4

WS 4A - Clearing the Air: Palau's Path to E-Cigarette-Free Youth, *Jayvee Grapa* |

Room Sonoran 1

Join us as we delve into the urgent public health issue of escalating e-cigarette use among youth in Palau. From alarming statistics revealing a 300% increase among 9-11-year-olds to a 95.24% uptick in young adults aged 18-20, the need for comprehensive action is undeniable. Our presentation focuses on evidence-based interventions, education campaigns, and policy reforms crucial to stem this tide. Learn about targeted early intervention, addressing adolescent vulnerabilities, and engaging young adults effectively. Discover how policy advocacy, including RPPL 11-27's total ban on e-cigarettes, plays a pivotal role. We emphasize a comprehensive community approach, highlighting collaborative partnerships and the integration of mental health services. Through multidisciplinary collaboration and data-driven strategies, we aim to catalyze actionable steps toward a healthier, e-cigarette-free future for Palau's youth and young adults.

WS 4B - Expanding the Prevention Workforce: Washington State's Health Care

Authority's/Washington State University's Prevention Fellowship, *Lea Marcotte, Tsion Beshah, Gavin Mina, Yonathan Zerfu, Clara Hill, Endalkachew Abebaw, Sonja Pipek, Sarah Mariani* |

Room Sonoran 2

Over the past 5 years, the Washington State's Health Care Authority Division of Behavioral Health and Recovery and Washington State University have partnered to create and manage a prevention fellowship, which is now in its eleventh cohort of fellows. The fellowship aims to build prevention workforce capacity by helping educate and train new prevention professionals. This workshop, led by current prevention fellows, will explore the history of the fellowship; what each phase of the fellowship entails; and the ways in which the fellowship has impacted Washington State thus far through the collaboration with and support of the Community Prevention and Wellness Initiative (CPWI) communities.

WS 4C - Effective Communication Campaigns: A Case Study from North Carolina, *Holly Carter* |

Room Sonoran 3

A Communication Campaign can help shape attitudes, values and behaviors in order to reach a desired outcome. The Lock Your Meds Communication Media Campaign is successfully achieving the outcome of decreased access to prescription medications in North Carolina. Campaigns like this can provide leverage needed to create and change policy at a local level as well as State and Federal levels. In this presentation, hear about some of the innovative ways coalitions have supported creating and changing policy in their communities to improve safe storage and disposal of prescription medications, resulting in decreased access.

WS 4D - Building a Supportive Environment: Strategies for Preventing Substance Misuse in Older Adults, *Chuck Klevgaard, Pat Zuber-Wilson* | **Room Palm 3AB**

There is growing concern among prevention specialists and public health officials regarding older adults and substance use, misuse, and increasing substance use disorders. Substance use in older adults is complicated and is often overlooked, especially when individuals are experiencing other aging related health conditions. While the number of older adults experiencing substance use disorders dramatically increased in the last 20 years, prevention services have not been tailored to the needs of older adults. This session will highlight the growing problem, approaches to understanding the older adult population in your community with an emphasis on psychosocial factors, and available strategies. Additionally, you will hear directly from preventionists who are implementing programming with this population.

WS 4E - Harmonizing Horizons: Innovative Resources for Prevention and Harm Reduction, Samantha Bone, Scott Gagnon | Room Palm 3CD

The session will lead participants through how harm reduction (HR) practices and services save lives and increase equity within the SUD continuum of care, best practices for engaging affected populations, resource highlights from SDRI, and funding opportunities for HR using Opioid Settlement Funds. Participant groups will be asked to identify everyday examples of HR, correct stigmatizing language to person-first language, draw their own SUD continuum of care that includes HR, and discuss potential challenges and benefits of integrating HR into current human services systems.

WS 4F - Raising the Stakes: A Blueprint for Inclusion of Problem Gambling into a Statewide Prevention Framework, T Schweimler, Colleen Hughes | Room Sierra 1/2

As prevention infrastructure expands nationwide, a clear opportunity has emerged to integrate problem gambling into existing substance use and suicide prevention frameworks – allowing providers to leverage existing capacity and a shared risk and protective factor approach to elevate problem gambling into their narrative and ensure sustainability of efforts. Unfortunately, few states have embraced this approach, with problem gambling prevention too often siloed and disconnected from greater behavioral health prevention efforts. This session will showcase Virginia as a compelling case study, demonstrating how problem gambling prevention can be incorporated into a state-level substance use and suicide prevention model.

WS 4G - Addressing Social Determinants of Health to Prevent Substance Misuse, Kim Dash, Maria Valenti, Josh Esrick | Kaibab Room

This panel discussion will examine the social determinants of health (SDOH) and their relevance to substance misuse prevention. The panel will define the SDOH and explain their impact on health outcomes, including reviewing confirmed linkages to substance misuse risk. Highlights of state and local efforts to address SDOH linked to substance misuse risk will be included. Presenters will also discuss opportunities across the prevention continuum for addressing the SDOH and identify potential areas of involvement for prevention professionals working at the state and local level. In addition, the presentation will introduce a new SAMHSA-funded digital toolkit that provides more information about the linkages between the SDOH and substance misuse risk.

WS 4H - Engaging Coalitions in Policy Work to Prevent and Reduce Underage Drinking: The ICCPUD Alcohol Policy Academy, Alicia Sparks, Michael Sparks, Aaron Graffman |**Lantana Room**

This presentation will provide an overview of the science around policy interventions to prevent and reduce underage drinking, followed by a discussion of the ten policy steps that coalitions are being trained on. One coalition will discuss their experience in the Alcohol Policy Academy, including their experience doing policy prevention work and challenges and successes. One area of focus will be the inclusion of equity considerations throughout each of the ten policy steps, as well as how the coalition focused on building community power and ensuring that their policy campaign was grounded in an equity-centered approach.

WS 4I - A "Brave Little State" has Big plans for Workforce Development, Beth Shrader, Taysa Lynch | Mesquite Room

Follow Prevention Works! VT and its partners in their process to address workforce development in the small, rural state of Vermont. Explore the formation of an engaged work group, review of the multi-step process and the resulting strategic plan, along with the collaborative opportunity that resulted. Assessment tools, templates, and work group activities will be shared for replication by any size community or organization.

WS 4J - Creating Collective Impact in Prevention, Merilee Fowler | Noble Room

Coalitions in Arizona have united to create collective impact in educating communities on the risks of fentanyl, counterfeit pills, and psychostimulants. This presentation will explain how the Substance Abuse Coalition Leaders of Arizona (SACLAz) created and implemented a community education and awareness campaign statewide. The campaign included print materials, educational presentations, and media materials. Through the campaign, community awareness on these substances increased over 60%.

10:30 AM - 11:30 AM

Workshop Session 5

WS 5A - If Prevention and Recovery Just Sat Down for a Cup of Coffee, *Kymberly Laube* |**Room Sonoran 1**

Sometimes it can seem as if prevention, harm reduction, and recovery are at opposite ends of the spectrum, however all have a goal and need for reducing harm and developing healthier communities. By drawing lines in the sand, those working towards improving prevention, treatment and recovery from Substance Use Disorder are not able to use each other as meaningful resources, and in turn short circuit conversations that could be extremely beneficial for all. By breaking down these silos and truly banding together to focus on healthier communities and individuals, we can drastically reduce triggers for those in treatment and recovery and delay the onset of use for our youth.

WS 5B - Rethink The Drink: Addressing Excessive Drinking in the Construction Industry,*Max Margolis* | **Room Sonoran 2**

This interactive presentation focuses on how alcohol impacts mental health and suicide within the construction industry. In 2022, the Construction Suicide Prevention Partnership (CSPP) partnered with Rethink the Drink (RTD), an initiative of the Oregon Health Authority's Public Health Division, to create a construction-specific toolkit to help companies establish new pathways for addressing alcohol misuse and suicide. This toolkit includes infographics, flyers, and sample articles that can help construction leaders effectively communicate the risks associated with alcohol use, including its incontrovertible link with suicide.

WS 5C - Know Your Community: Environmental Scans and Data Visualizations for Preventionists,*Rachel Witmer, Holly Hagle* | **Room Sonoran 3**

Conducting a needs assessment is a crucial step in implementing an evidence-based prevention program. It can be difficult to synthesize the assessment data in a way that is easily interpreted and/or a way that identifies a clear community need. This session will outline how to use an environmental scan as part of the assessment process and create data visualizations that are easy to interpret and provides a clear picture of the community as a way to map needs and resources.

WS 5D - Applying an Equity Lens to a Coalition-Based Prevention Evaluation, *Jordan Newburg,**Konul Karimova, Heather Terral, Sarah Mariani* | **Room Palm 3AB**

This presentation will provide the audience with an overview of coalition-based prevention in Washington State, how an equity evaluation was developed within this context, and the results and implications of that evaluation. Audience members will have a chance to reflect on how this work might be applied in their settings and discuss ways to improve upon future equity-focused evaluations.

WS 5E - How Does the Substance Use Prevention Infrastructure Influence the Adoption of Evidence-Based Interventions? Tips and Resources for the Prevention Workforce,*Feker Wondimagegnehu, Elvira Elek* | **Room Palm 3CD**

This presentation will focus on results of a study that examined how the state- and community-level substance use prevention workforce views their infrastructure for supporting prevention activities, and how funding and other factors influence decision-making around adopting and implementing evidence-based interventions (EBIs). Data was collected from a nationally representative sample of National Prevention Network (NPN) representatives and community-level substance use prevention providers.

WS 5F - Regional Partnership Engagement & Primary Prevention Activities, *Jacqueline Beale, Mary Ewald, Heather McDonnell-Stalnaker, Michelle Taylor, Rachel Brase* | **Room Sierra 1/2**

The presentation will provide an overview of the key primary prevention partners at the federal, state, local and regional levels, specifically, the implementation of the SUBG-Prevention Set Side and the Strategic Prevention Framework (SPF) Partnership for Success Grants. The presentation will highlight and provide an overview of the quarterly regional convening of key primary prevention partners.

WS 5G - Partnering for Success in Reducing Tobacco Use Among African Americans,***Bonnie Favero, Matthew Brown | Kaibab Room***

Martinsville and Henry County, located in southwest Virginia, have historically had the highest rates of substance use in the state, including tobacco. African Americans face a higher rate of tobacco-related deaths compared to others in the community. Partnering with an African American fraternity was crucial to expanding our outreach and addressing tobacco-related disparities.

WS 5H - Prime for Life Immersion, Kim Parent | Lantana Room

In this training you will learn about the benefits of the Prime for Life programs and successes. Participants will learn about the various options for teaching Prime for Life, evaluation, content and get to participate in some fun interactive activities. You'll leave this training with a better understanding of the Prime for Life programs and if Prime for Life will be a good fit for you and your community.

WS 5I - From the Status Quo to Data-Driven Prevention: The Role of Collaborative Partnerships in Transforming the Prevention Landscape in Virginia, Eden Griffin, Colleen Hughes,***Keri-Lyn Coleman | Mesquite Room***

In 2014, Virginia began its partnership with the OMNI Institute and shortly after transitioned their data system to CPGSI's Performance Based Prevention System (PBPS), beginning collaborative partnerships that have transformed Virginia's prevention landscape into a data-driven system. Together these organizations worked to build the capacity of the prevention workforce to enter, manage, utilize, report, and make key decisions with data. The PBPS allows staff to enter and access data across each step of the Strategic Prevention Framework, and accompanying evaluation plans, logic models, data entry plans, training, and technical assistance provided by OMNI ensure staff understand and track data to achieve desired outcomes.

WS 5J - Equitable and Innovative Opioid Overdose Prevention and Response in Chicago,***Sarah Hernandez, Chuck Klevgaard, Dina Khalil | Noble Room***

Education Development Center (EDC) worked closely with the Chicago Department of Public Health (CDPH) in leading evaluation capacity building with agencies implementing opioid overdose prevention strategies. Through our tailored technical assistance and culturally responsive engagement, we supported agencies in outcome measurement, continuous quality improvement, and peer learning. In 2023, EDC convened agencies for an evaluation roundtable session in which agencies engaged in structured peer sessions to co-develop ideas, innovations, and community centered solutions to opioid overdose response and prevention in Chicago. We analyzed and compiled roundtable discussions into a set of core recommendations for CDPH. In this presentation, we will share these findings and discuss emergent and innovative strategies that can advance equitable opioid overdose prevention.

11:45 PM - 12:00 PM**Closing Remarks**